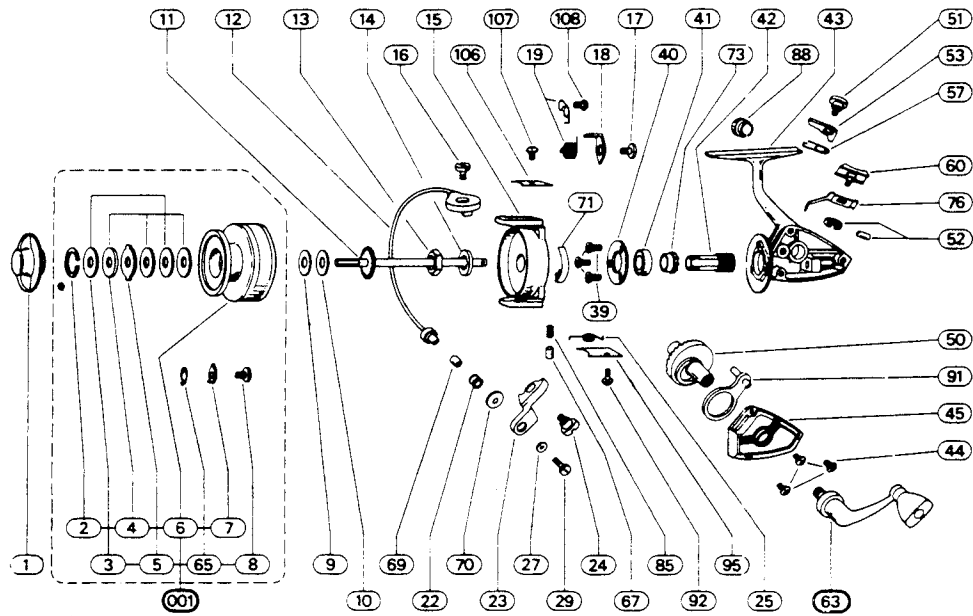


2200-035



Old model

REF. NO.	PART NO.	DESCRIPTION	REF. NO.	PART NO.	DESCRIPTION
001	79-66-0074-01	Spool Assy.	41	79-04-0001-01	Ball Bearing
1	79-40-0059-01	Nut	42	79-46-0030-01	Pinion
2	79-54-0001-01	Retainer Ring	43	N/A	Frame Assy.
3	79-72-0121-01	Metal Washer	44	79-58-0148-01	Cover Plate Screw
4	79-72-0125-01	Fiber Washer	45	79-47-0093-01	Cover Plate
5	79-72-0129-01	Eared Washer	50	79-28-0019-01	Drive Gear
7	79-43-0002-01	Click Pawl	51	79-58-0006-01	N-R Pawl Screw
8	79-58-0001-01	Click Pawl Screw	52	79-54-0002-01	N-R Button Retainer
9	79-72-0150-01	Rear Washer	53	79-43-0023-01	N-R Pawl
10	79-72-0150-01	Rear Washer	57	79-67-0044-01	N-R Pawl Spring
11	79-60-0038-01	Main Shaft	60	79-10-0019-01	N-R Button
12	79-03-0033-01	Bail Wire	63	79-20-0058-01	Crank Assy.
13	79-40-0001-01	Pickup Nut	65	79-67-0003-01	Click Pawl Spring
14	79-72-0006-01	Pickup Washer	67	79-00-0001-01	Bail Stop
15	N/A	Pickup Housing	69	79-63-0001-01	Line Roller Sleeve
16	79-58-0147-01	Bail Screw	70	79-21-0001-01	Spacer Cup
17	79-58-0061-01	Trip Lever Screw	71	79-08-0001-01	Bail Brake
18	79-43-0019-01	Trip Lever	73	79-50-0008-01	Ratchet
19	79-67-0038-01	Trip Lever Spring	76	79-02-0008-01	Throwout Arm
22	79-57-0001-01	Line Roller	85	79-67-0004-01	Bail Stop Spring
23	79-07-0012-01	Bail Bracket	88	79-12-0008-01	Crank Cap
24	79-58-0147-01	Bracket Screw	91	79-37-0001-01	Level Wind Lever
25	79-67-0001-01	Bail Spring	92	79-58-0149-01	Bail Spring Plate Screw
29	79-58-0050-01	Roller Screw	95	79-47-0094-01	Bail Spring Plate
39	79-58-0032-01	Bearing Retainer Screw	106	79-47-0095-01	Trip Lever Plate
40	79-53-0014-01	Bearing Retainer	107	79-58-0143-01	Trip Lever Plate Screw